

Figure 3 - Incoming Truck Route:

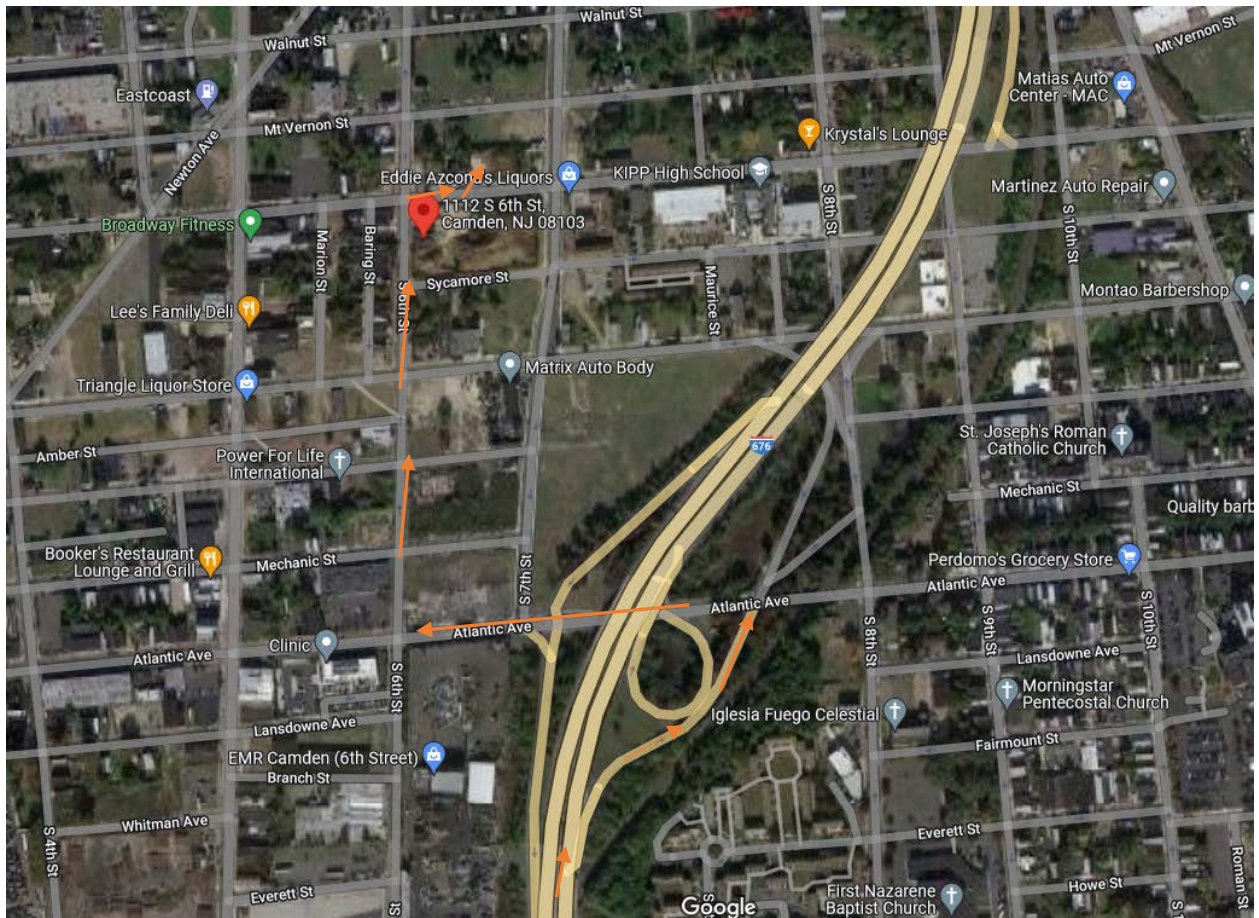
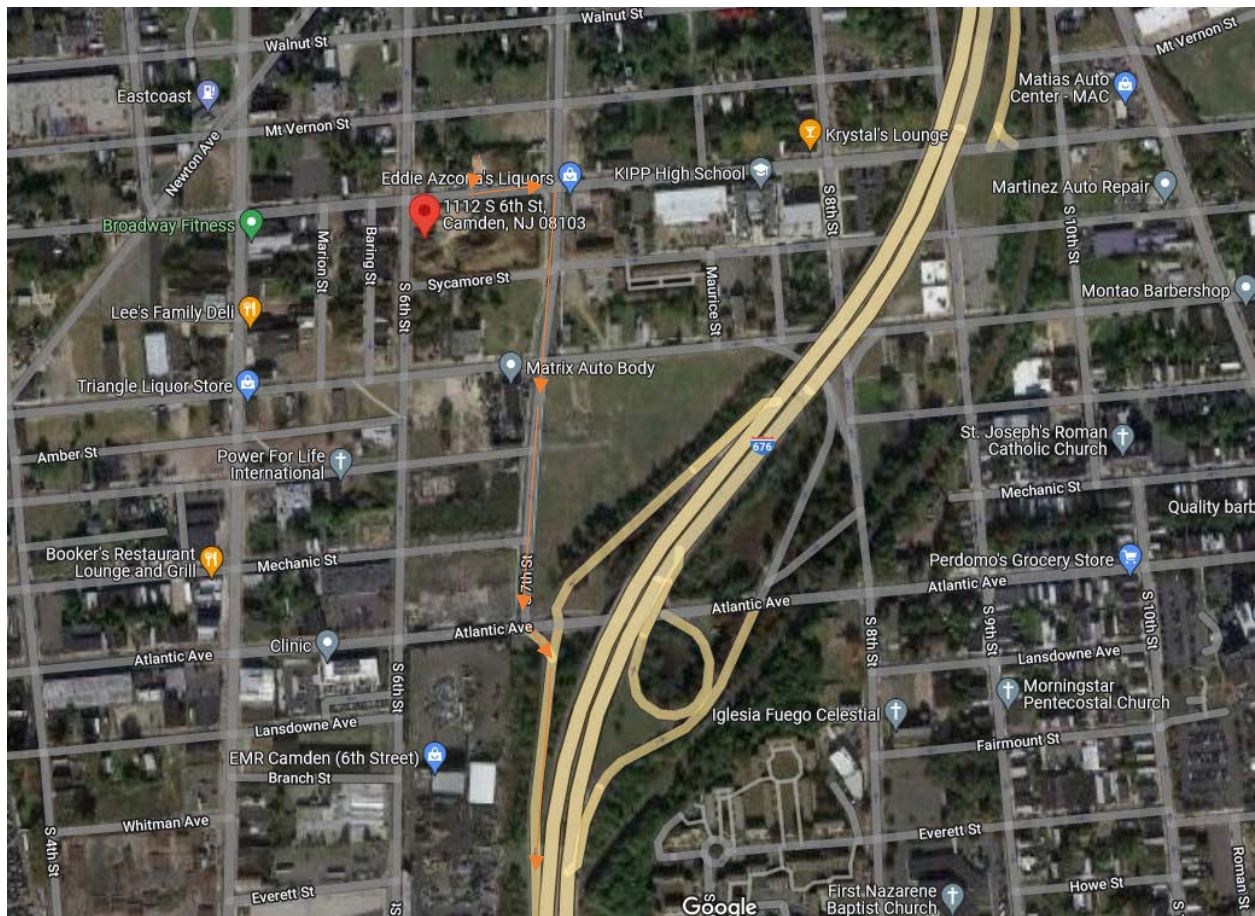


Figure 4 - Outgoing Truck Route:



6.0 DECONTAMINATION PLAN

Ambient shall decontaminate equipment when switching from handling contaminated material to handling clean material and prior to demobilizing from the site. This shall be accomplished by brushing the bucket and/or tracks to remove any contaminants that may have adhered to the surface.

After the trucks are loaded with material, the load will be covered utilizing a tarp and the truck will be brushed free of any spillage to prevent accidental track out. Dump trucks, trailers and other rubber tire vehicles will be dry brushed as needed to remove any visible soil chunks that may be present.

Paved streets shall be swept frequently (water sweeper or wet broom) if soil material has been carried onto adjacent paved, public thoroughfares from the project site.